

# NISI 2400

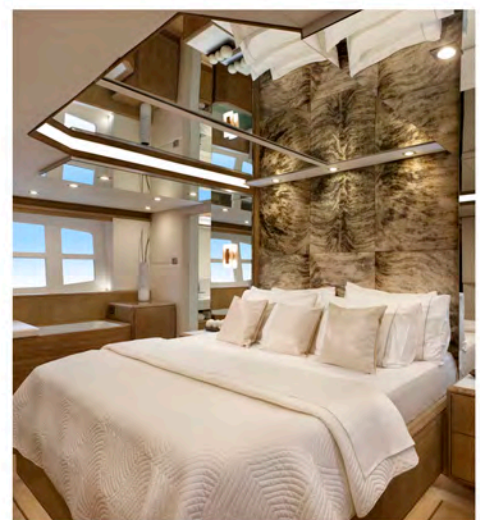
*Legendary Styling. Casual Opulence.*



NISI 2400 (+1-416.907.0869) is the first in a trio of high-performance motor yachts from NISI Yachts, which is based in the Bahamas and in Hong Kong. (Bahamian builder Tricon Marine is constructing the vessels.) American naval architect Ward Setzer's design of the NISI 2400 incorporates elements from several boat types. A slender, wave-piercing hull that evokes International America's Cup Class sailing yachts provides a seaworthy ride even in the roughest conditions, while the rectangular superstructure suggests a buttoned-down cruiser for rain-soaked climes. For the enjoyment of pleasant weather, the 2400 has an observation deck, an open-aft cockpit, and a

swim platform at the stern. The full-deck salon contains areas for socializing and dining, and it connects to the aft deck through a full-width patio door. The 78-foot boat, which has a price ranging from \$3.7 million to \$4.7 million depending on design options, accommodates eight passengers and two crew-members in five staterooms.

It is equipped with a 1,800 hp Cummins Zeus pod propulsion system that provides exceptional close-quarters maneuverability, a top speed of 28 knots, and a range of 1,500 miles when the yacht is cruising at 9 knots. - M.V.



*NISI Yachts, +1 416 907 0869,  
www.nisiyachts.com.*

